



Kimpton Parish Magazine

*Spring 2021
Number 265*

All your
regular items
including
exciting news
from Kimpton
Pre-School
on page 18!

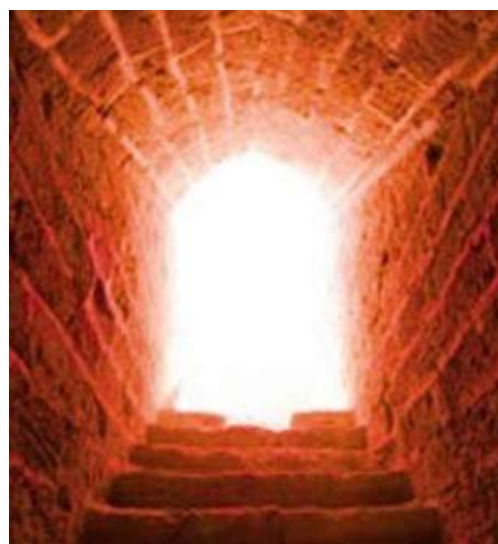
Easter 2021 and God opens the door

Have you ever knocked at a door and wondered if anyone will answer? It's has felt like that during this year of pandemic and lockdown. It's been almost impossible to knock on people's doors to ask if they're ok. We've all been shut in. There's something of darkness associated with shut doors, isn't there? Closed doors are forbidding, unwelcoming, mysterious. Are they closed to keep us out, send us away? On Good Friday two millennia ago, it was to keep people out and to keep him hidden, that *'.....the chief priests and the Pharisees gathered before Pontius Pilate and said, 'Sir, we remember what that impostor said while he was still alive, that after three days he would rise again. Therefore command that the tomb be made secure until the third day; otherwise his disciples may go and steal him away, and tell the people, "He has been raised from the dead".....' Pilate said to them, 'You have a guard of soldiers; go, make it as secure as you can.'* So they went with the guard and made the tomb secure by sealing the stone. (Matt 27:62-65) And Mary Magdalen and Mary the mother of Joses stand in front of this particular closed, forbidding, sealed door to a tomb. They are shut out, sent away, full of foreboding and grief at the darkness---the darkness of their Lord hidden and unseen and shut away from them behind a door that will seemingly never open. The image we share again at the end of Holy Week this March.



Doors generally lead us to new places –and what a spectacular new thing, a new creation is revealed when the door to this tomb is unsealed and thrown wide open after three days. But before something new comes, there is often a 'holding-place' – a place of change and transition. And transition times can be painful, as the things that have changed, the wounds, heal. We need a time of adjustment and reorientation – a time to gather and prepare.—a holding place. As we drive along Boris Johnson's road map out of lockdown, this is what we need—a time to gather and prepare, to take stock of where we've been and where we are going now –a holding place. Jesus' holding place was this tomb with its sealed stone door. Within his time of transition, he broke the chains of death and hell, redeemed Adam, paid the price for our sin.

Not many people will have experienced standing in a tomb. The nearest I have come to that experience was standing in the ossuary at Chemin des Dames on the World War One Western front in France. We were invited to enter the dark, dank and forbidding domed 'tomb'. Turning back to the doorway to leave, I was struck by how the doorway was filled with a stream of bright, blinding light. I could easily imagine the women who went to Jesus' tomb on Easter morning. Expecting darkness, they see the door open. They enter the tomb and it's empty—and they turn around and see the stream of light. Imagine that first Easter Day where everything vibrates, glows bright with the presence of God and through the resurrection of Christ, new life infuses everything. That rock tomb doorway was a threshold. Imagine the women crossing that threshold, into the light. What an amazing door to open – and an even more amazing one to walk through.



to page 3

from page 2 A door is symbolic of times of great change and that's exactly the doorway we all stand at together now, believers and non-believers as we all hope and pray that we're going to come safely out of these Covid-19 times. Things will not be the same. Many of us mourn loved ones who succumbed to Covid-19. Many more struggle to recover. We're about to cross a threshold into a society which is going to be entirely different.

God often opens doors for us in our spiritual journeys. But God doesn't just have them swing open on their hinges for us. Sometimes there is a time of knocking on the door and having to wait. Sometimes doors seem enormous and sealed against us. Sometimes doors squeak and stick. We need to respond to the open-door God offers from our side too-- by actually turning the handle and pushing the door open and putting our foot in the door if need be. Sometimes as we walk over the threshold of an open door, we are leaving our own 'holding place' --that place to catch breath, to be transformed, to face a new part of our lives ready for the new direction our life journey is going to take us. For Christians Easter, that open tomb, is part of the journey towards deeper faith following Jesus, the Light of the World.

God opens the doors for us. Prepare to push the door open wide. It doesn't matter whether you walk hesitantly or confidently over the threshold from the darkness places we've been in for the last year. Easter is a dazzling place where the door hasn't just been flung aside, but smashed clean away. Jesus Christ's resurrection *'is a world drenched with light, God's beauty shining through; yet it's our own world we are seeing, seeing it as God made it to be, seeing ourselves as God made us to be. We are walking into daylight.'*

I continue to pray for all who live in our villages that you will come through this last year and this pandemic safely, strong enough to find your 'holding place.' I pray you may have the strength to push open whatever doorway stands in front of you, which God has opened for you -- and the courage to cross the threshold He invites you to cross. I pray we will all walk into the dazzling Light of the World, Jesus Christ this Easter Day. Happy Easter to you.



Rev'd Linda Williams

Picture credits; *The Harrowing of Hell icon Vladimir Krassovsky*

From the Registers

Burials, Cremations & Interments

5 th December 2020	Pamela Mary Matthews
18 th February 2021	Derek Butterfield
22 nd February 2021	Helmar Kurt Eck
3 rd March 2021	Alan Fowler
5 th March 2021	Kenneth Dyke



Photo: Andy Wright

The late Ken Dyke receives an award, from John Leeson, for services to the community in March 2001.

Holy Week and Easter Church Services 2021

St Peter & St Paul Church, Kimpton

Sunday 28th March at 9.30am Palm Sunday Service of Blessing Palm Crosses, Passion of Jesus & Holy Communion

Thursday 1st April at 7pm Service of Holy Communion for Maundy Thursday.

Good Friday 2nd April at 9am Raising the Cross at Peter's Green in conjunction with Peter's Green Baptist Chapel, followed by socially distanced Walk of Witness from Peter's Green to Kimpton.

Good Friday 2nd April at 11.30am Contemplative Worship at Kimpton Church –a short service reflecting on the events of Good Friday and Jesus' death on the cross.

During the day BLAST families create an Easter Garden in church.

Easter Sunday 4th April 6.30am Sunrise service – kindling the fire for the 1st Holy Communion of Easter.

Easter Sunday 4th April 9.30am Celebrate Easter with the Risen Christ. Bring a flower to bring the bare cross into bloom. Children's' activities.

St Lawrence, Ayot St Lawrence

Easter Sunday 4th April 11.30am Celebrate Easter with the risen Christ – with real live new born lambs and children's' activities during our service.

Kimpton churchyard trail

There be a new trail in Kimpton churchyard to follow specially for Holy Week. From Palm Sunday, there will be a 'stations of the cross' trail. Keep a look out for Easter Mouse who helps to tell you the story of Jesus' last week with his friends and of his betrayal and death 2,000 years ago.

On Saturday 3rd April there is an Easter trail organized by Kimpton School PTA around the whole village with a stop at the church. Come along and enjoy both.

Rev'd Linda Williams



KIMPTON PRIMARY PTA

EASTER TRAIL

SATURDAY 3RD APRIL 2021

Socially Distanced Trail in line with Covid Restrictions

Follow an **EGGCITING** trail around the village, with lots to discover and **EGGSPLORE**. It will be an **EGGSTRAVAGANZA!!!!**

ALL CHILDREN VERY WELCOME

START THE TRAIL ANY TIME AFTER 2PM. CLAIM YOUR PRIZE AT THE END OF THE TRAIL FROM KIMPTON SCHOOL UNTIL 5PM

£3 per child

To book your tickets and to receive your map, please
Email: pta@kimpton.herts.sch.uk

To adhere to rules on 3rd April, all groups should be of two households or fewer and remain socially distanced

Prayer Corner

If you would like to have a few moments of prayer or contemplation, please feel free to come to our new Prayer Corner in the Church. There is an opportunity to light a candle for a loved one and sit for a while to think about them and perhaps offer a prayer.

Instead of the Prayer Board, we have a book, where you are invited to write your prayer requests, this will be dated monthly so that there is a permanent record. The Church is open every day and all are welcome to come and experience the peace of our Prayer Corner and beautiful Church.

Speed Limits

Consideration to the introduction of a 20mph speed limit in Kimpton commenced last year.

Hertfordshire County Council Highways have completed an initial Stage 1, which includes a proposal to introduce a 20mph area within Kimpton village, along with associated signage, speed cushions, and possible speed control measures at Hitchin Road and Coopers Hill.

The Stage 2 phase of the project commences after April and will include engagement with the community, the police, and other parties, to verify its acceptability. Your views upon the proposals will help to shape the solution and determine whether it will be progressed or not. Evidence indicates that the risk of death or serious injury to a pedestrian struck by a vehicle at 20mph rather than 30mph is reduced from 50% to near 15%. The counter view would be that vehicle travel times along the length of the High Street would be increased by 1 minute. Many thanks to Cllr Alex Firth and the Highways Working Party for their determination in moving to this position.

Affordable Housing

KPC have been working with Hightown Housing Association to find ways to deliver the 24 dwellings that were identified within the 2019 Parish Housing Needs Survey. Hightown have developed a proposal and made a financial submission to Oxford University to acquire land at the north west of the village. We have recently heard that Oxford University has notified Hightown, that at this time they do not wish to consider the matter further. This is obviously disappointing news to the community. The only opportunity currently available to us to deliver affordable housing is to ensure that the land between 138 and 146 High Street, that has a current planning application from Oxford University for 15 dwellings, can be encouraged to deliver a portion of this as social housing need.

Planning Applications.

As a Council we welcome applications that offer a high quality of design, affordability, meet government national space standards, proven defined sustainable delivery, address community defined requirements and add value to the parish.

Planning submissions for new dwellings in Kimpton have risen over the last 6 months. Applications currently being considered by NHDC total 30 new dwellings. The largest of these sites is by Oxford University for 15 houses upon the land on the north side of the High Street at the west end of the village. Five of these have been designated for affordable housing, which would make a valued contribution to the community need if realised. Further to this, nine dwellings are proposed at the old Ron Hyde Dairy, three at Lime Avenue, and three at the Greenvelt Kennels, near Peters Green.



I'm delighted to say Kimpton has joined the Greening Campaign, a grassroots national initiative of communities working together to create a healthier, happier future. Cllr Ian Corbett is leading the initiative on behalf of the council, but to make it a success we need as many people as possible from within our community to get involved. There will be a Zoom meeting on Tuesday 20th April at 7pm, so please join it to find out more. We'll also send out further communications in April. One of the first activities is the planting of 100 trees within the village. *to page 7*

From page 6 **Horse Show**

After over 12 months with Kimpton being unable to hold any of the events that it is so well known for, it is fantastic to see that Kimpton Horse Show will take place on Sunday the 25th July. We hope that this is the first of a return of many regular village events.

For events taking place in the village please see kimptonpc.org.uk/events-calendar/ and if you want your event promoted in this calendar contact the Parish Clerk.

Kimpton Flood Risk

In January 2021 the Environment Agency reported that all the catchments in Hertfordshire had received exceptionally high rainfall over the previous six month period, (170% of the long term average falling between October and January) which resulted in saturated ground, higher river flows, and flood warnings.

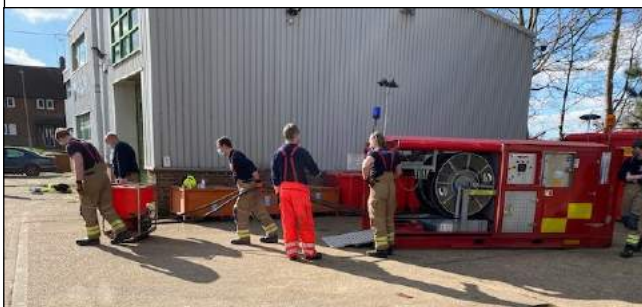
Subsequently, they issued a flood alert for Kimpton / Lilley Bottom

check-for-flooding.service.gov.uk/target-area/062FAGKimptonGW



Groundwater flow most likely relates to rainfall events which are not recent (possibly months ago) and is slower to respond to rainfall than rivers but can last for a long time. It is extremely problematic to manage as it covers significant areas and large volumes of water.

Kimpton last suffered groundwater flooding in 2001 kimptonvillage.tsohost.co.uk/flood.htm



Gully cleaning in the High Street (top) and a fire crew undertaking flood test in the village recently.

Hertfordshire County Council as the Lead Local Flood Authority LLFA were made aware of the rising groundwater levels by EA reports. North Herts District Council also reported elevated levels from monitoring a sump on the outskirts of Kimpton. As the Lead Local Flood Authority, HCC is the authority with powers to manage flood risk from groundwater.

HCC is coordinating a multi-agency group to monitor and prepare for potential flooding in Kimpton. Officers from Hertfordshire County

Council, The Environment Agency, North Herts District Council and Kimpton Parish Council are meeting regularly to review any response. A review of options based on the findings from 2001 is being carried out: infrastructure including the highway drainage has been surveyed and cleaned; Fire and Rescue carried out a trial deployment of their high-volume pump.

It is unclear at present if flooding will occur, or by what mechanism, and it could be several weeks before changes in groundwater levels are seen. Groundwater levels are currently rising and the levels in a sump installed near the Industrial Estate on Claggy Road are being monitored daily by NHDC. The current groundwater levels are lower than in 2001 when flooding occurred.

Extensive pumping was carried out in 2001 to help guide groundwater coming from springs higher up the valley through the village. Claggy Road is the area most impacted directly, with the Enterprise Area and several houses being affected. The options for mitigation, including pumping, are being explored.

to page 8

from page 7 If required it could need to be in place for 6 to 8 weeks and there is the possibility that not all impacts can be mitigated especially if flows are significant as capacity to move water away from the area is limited and there is potential to increase flood risk downstream.

During the third week in March ground water levels stopped rising and remained static over a 9 days period. It is difficult to tell if the current slowdown will turn into a fall, or whether it might return to a rise in groundwater levels.

Regular updates will be issued on Kimpton Village Facebook.

Neil Burns

THE REMOVAL OF FLINTS FROM NEW AND RECENT GRAVES IN THE CHURCHYARD

Please do not remove flints from graves. They are important in binding the soil during settlement of new graves.

Please do not pile flints at the foot of the church walls as they block the drainage of surface water into the specially dug Fin* drains around the foot of the walls. ***Fin drains** are narrow trenches which utilise a 'geo-grid' sandwiched between layers of 'membrane' or 'geo-textile' which act to direct any groundwater and/or surface water directly into a traditional piped **drainage** system. The gravel over them is part of this drainage system and so are not there for aesthetic reasons. The drains are expensive to install and we do not wish them to be broken or end up with flooding issues. Thank you for your help with this.

NOTICE OF CHURCHYARDS INSPECTION DURING 2021

Kimpton and Ayot Parish Priest and the Parish Church Councils have overall responsibility for issues relating to the care, maintenance and safety of our churchyards.

I am giving notice that under Sections 3e, 3i and 4.1 of the Churchyard Regulations August 2020, I will be inspecting the churchyards for which I am responsible during 2021.

On the grounds of the health and safety of all who visit, tend graves and walk through the churchyards, I will be removing any **broken** free-standing plastic, metal and glass containers (which are not permitted under section 3e as they are safety hazards). The Parish Church Council has the right to remove dead and artificial flowers (including silk flowers that have deteriorated) at any time to keep the churchyard tidy.

Please remember that the following tokens of love and loss should be temporary items only and you should remove them when they fade, break or become safety hazards. This includes: all items of value to you, statuettes, ornaments, toys, artificial grass, glass, metal and plastic items. I want to reassure you that I will not be removing any personal items.

We all want to work together to keep our village churchyards as beautiful memorials to our loved ones and to the glory of God. It is also important to keep them as safe places where loved ones rest in peace and we can visit them without fear of risk.

Thank you for your continuing co-operation.

Rev'd Linda Williams, Priest-in-charge.

Regular Services at St Peter & St Paul Church

1st & 3rd Sunday of the month 9.30am Holy
Communion

2nd & 4th Sundays of the month 9.30am
Worship Service

2nd & 4th Sundays of the month 8am Said Holy
Communion in the Millennium Room

5th Sunday varies.

Visit these websites for
up-to-date village news and past
editions of this magazine and
much, much more.

kimptonchurch.co.uk
kimptonvillage.com



As we approach the anniversary of the first lockdown, and the last time we were able to hold a full members' meeting in the

Memorial Hall, we realise how much we all miss the personal contact and social gathering. Although we did manage some mini garden parties during the summer and a few committee meetings, contact has mainly been limited to emails and newsletters from our Secretary and President, birthday posies, telephone chats and Zoom talks organised by the Herts Federation. Even our planned, and much anticipated, Christmas lunch had to be cancelled due to Tier 4 restrictions!

However, hope is on the horizon! Thanks to our wonderful NHS and the successful rollout of the vaccination programme, we are all looking forward to better days ahead.

With these better days will come the resumption of monthly meetings of our book and handicraft groups. Although unable to meet, our knitters and stitchers have certainly not been idle throughout the pandemic. Among the items that have been made for the NHS, charities and hospitals are baby blankets, neck mufflers, cushions and pillow cases for nurses' uniforms. Sewing machines and knitting needles have been in overdrive! The library service has been able to provide several sets of books for the bookworms amongst us and the Church book swap has also been a valuable resource.

Table tennis, unfortunately, will not now resume until our new season in September.

We have recently received news of the re-opening of the Memorial Hall for meetings - hopefully in mid May. With this in mind, the committee will be planning for "normal" life! When we are up and running again, notices will be displayed around the village and we would love to welcome visitors and new members, of all ages, to our monthly Wednesday evening meetings. A warm welcome, and tea/coffee and biscuits!, awaits.

For more information about Kimpton WI please contact our Secretary, Liz Haynes (01438 832500)



Just before the first national lockdown was announced in March of last year, we had already made the decision to cancel the 2020 Kimpton May Festival. At that time, we never imagined that in April / May 2021 we would still be living with restrictions that mean that we cannot hold the festival this year either. As it stands at the time of writing, we will only be at Step 2 of the roadmap out of lockdown by the first May Bank Holiday weekend so events that encourage people to gather and socialise will still not be allowed.

This is very disappointing especially as we are all desperate to get back to "normal" and we won't be able to raise money for local charities and groups as we would normally do.

It is also disappointing for the 2020 May Queen, Lexi Knight and Attendants Megan Harry and Poppy Lang who were selected and then told that they'd have to wait until 2021 to be crowned and now that won't be happening..

However, we are still considering what we could possibly do within the guidelines and will advertise anything we decide via the village Facebook page and posters round the village.

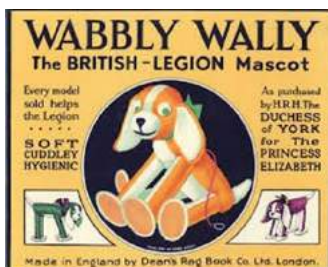
Here's hoping that by 2022 we will be back on track and that the other big annual village events, the Folk Festival, Horse Show, Autumn Show and Christmas Market will be able to go ahead later this year.

Kimpton May Festival 2022 – Friday 29th April to Monday 2nd May.

Barbara Kazwini
Chairman
07484 355914

Royal British Legion Kimpton Branch

You may have noticed that the RBL emblem has now changed..... But the ethos of caring for retired and current personnel and their families remains strong as ever. The Kimpton branch has remained active during Lockdown- even having our first Zoom meeting last month. It was a "First" for some and caused great hilarity!!



The British Legion was formed in May 1921 and celebrates its 100th Birthday this year. It did not receive the Honour of having Royal added to its title until 29 May 1971, its Golden Anniversary. Queen Elizabeth II is the Patron and gave the Royal title.

Back in 1928 the British Legion had a children's mascot, called Wabby Wally. He was a rag dog and Queen Elizabeth II was given one of these by her mother.



The South East Midlands Region Branch have introduced a Facebook page to try and encourage children to learn more about Remembrance -*South East Midlands RBL Poppy the Pigeon Club*. Please have a look and encourage your children to join you. It gives you some history surrounding animals and their importance -and sometimes bravery -during various conflicts. Did you know that animals can get bravery awards?

It also tells you how to make a Poppy the Pigeon!

We have not forgotten the amazing stones that were painted for VE Day 2020 and we are currently looking at ways of ensuring they are given pride of place somewhere in the village....More details to follow. *Kim Hills (Chairman) RBL (Kimpton Branch) 07901 605383*

Kimpton Cricket Club

Despite the lack of winter nets the 2021 season brings great excitement to Kimpton CC. The spring is showing the benefit of last autumn's pitch renovation and the square has never looked so good for March. There has been a great improvement to the playing surface. The new artificial wicket will be used to run an evening competition among teams from the village, with an exciting format of 100 ball 8 player games. The hundred brought to Kimpton, so look out for details.

Most importantly we are starting Junior cricket through the ECB participation programmes All Stars (5 to 7 years) and Dynamos (8 to 11 years) both for boys and girls. Both programmes will be 8 sessions long and run at Sunday mornings at 10.30am from May 9th. A group of volunteers has already started their activator training with the ECB and we look forward to welcoming children to the club in the summer. Links to the sign up can be found under the All Starts and Dynamos tabs on our website kimptoncc.hitscricket.com



The club's traditional programme of Sunday Friendly games has already been arranged. These are typically 35 over game starting at 1pm and new players are very welcome. There are also nets for Adults and older Juniors on Wednesdays. For further details check out the website or contact the chairman Simon Thompson (simon@kimptonpark.co.uk).



A 'Blue Sapphire' Couple

On the 9th June 2021 my parents June and Bill Symonds will have been married for 65 years!

They were married at St Mary's Church in Luton and then moved in to their first home on The Green in Kimpton.

When my sister Valerie, and a few years later, I came along Mum and Dad were offered one of the new houses that were being built in Commons Lane and they still live in that house and have shared 65 wonderful years together!

Thank you for all you do and continue to do for us, have an amazing day and we will celebrate when we are allowed!

Mum got married on her 21st Birthday so it is also her birthday on this anniversary and then we got married on the 9th June in 1984 so it's a big day for all of us!

What an amazing achievement and lots of love today and always from all your family and friends,.

Alison Sansom ((née Symonds)



Jigsaw swap

**WOW - What a success
the swap has proved to be
during lockdown!**

**But please absolutely no toys or games in
either the book swap area or jigsaw areas.
There isn't the room!**

Thank you so much for the all the jigsaws donated over the past few months. As in previous years, as there has been such a good selection in various sizes and because the Charity Shops are not open at present, I was approached and have given a dozen good quality jigsaws that have been part of the Swap for some time to a Church initiate in Harpenden. They are aiming to complete 100 jigsaws, mount an exhibition in the Methodist Church Hall later in the year and then sell the jigsaws to raise some much needed funds. They were absolutely delighted to receive our contribution.

I would appreciate it if you could please ensure the boxes are sealed or, better still, pack the

pieces in plastic bags as well, to save me trying to match up loose pieces from the bottom of the storage box. Recently several jigsaws have been returned stating that pieces are missing which means I have to dispose of the puzzles.

Thank you for your co-operation and enjoy puzzling.

Margaret Smith

margaret.smith5@talktalk.net

Kimpton Bowls Club

We are by now all aware of how important physical exercise, safe social interaction and being in an outdoor environment is. Although Kimpton bowls club is open to people of all ages, at this particular time, as we all take tentative steps towards normality, we are in a unique position of helping older members of the community to continue a competitive sporting life, enjoy gentle exercise, be part of a safe group and enjoy the benefits of fresh Kimpton air.

From April onwards, the bowls club is hoping to be in the first wave of outdoor sports allowed to open.

If you would like further information on what Kimpton Bowls Club can offer please contact me on 07707 700451. *Warren Phillips*

News from Ayot St Lawrence



Whilst human activity may have been a little quiet of late - although at least we have had services and visitors inside the church - we are pleased to report that our efforts with wildlife have been having some success.



During a mild week in February, one of last year's released hedgehogs emerged from hibernation to hurry around looking for food, no doubt; Martin (from Hornbeam Hedgehog Rescue) has released three more hogs recently around the church, so hopefully we can stem the sad decline of this lovely little garden-friendly mammal.

A curious hog emerging from hibernation a little too early - he was released last autumn here.

We are also very pleased to have spotted a barn owl flying across the fields in front of the church: two boxes were erected some years ago at our request by the Hawk and Owl Trust, and it looks as if they have been used. Let's hope this continues.

Sadly we have not been able to hold any cultural events at the church, but do have dates for later in the year.



Our Art Show will, we hope, take place in the church over the weekend of 18th and 19th September, although we will not be holding a Preview Evening this year.

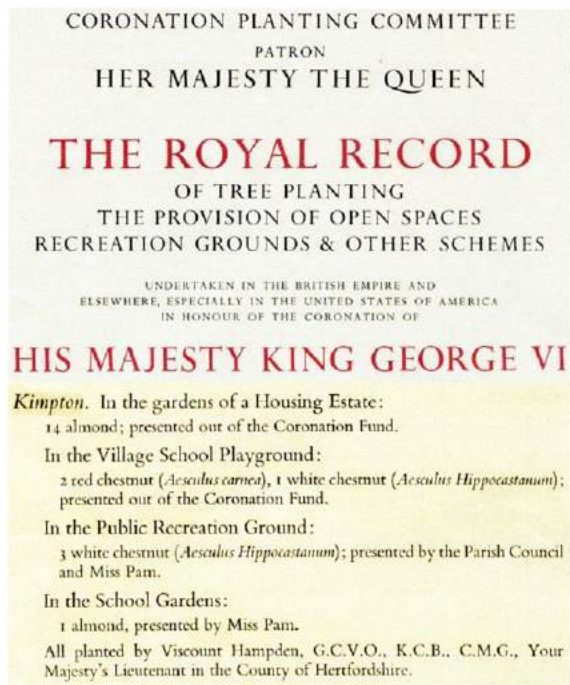
If you'd like to find out more, please contact Christine for more information, particularly if you'd like to help out in any way.



We really hope that we will be able to welcome our friends from the Voskresenije Choir in St Petersburg back for a concert of Russian sacred and folk music on Monday 4 October. This event sells out so once tickets are released, don't delay! To watch and listen to a selection of their music performed in 2019 use this link [The best fragments of Russian Sacred Music - YouTube](#)

Christine Stevenson christine@ayotstlawrence.com

A very short history of 20th & 21st century tree planting in Kimpton



The King George 6th proclamation was published in 1939. (Left)

In **July 1977** five Dacre Crescent residents, Pat Dyer, Jack Edwards, John Freeman, Bill Wood and Alan Smith shared a common desire to enhance the landscape and at Pat's initiative, we formed ourselves into an ad hoc group and produced a draft planting plan for presentation to the Parish Council for agreement early in 1978.

The Council's response was very positive and we were encouraged to form ourselves into a Tree Planting Committee with Pat as Chair and myself as Secretary, reporting to and funded by the Council. The Council approved the plan and agreed to fund the creation of a Tree Nursery, based at Pat's house, with supplies of whips and young trees purchased from the County Tree Bank, whose Manager was most helpful with advice on selection and spacing of tree varieties. Add stakes, straps, tubes, forks, spades, bone meal and muscle and we were in business.

Barry Twist, the PC chairman, was particularly helpful and proved to be an enthusiastic worker.

Pat was also instrumental in persuading the OUC to be on our side which enabled us to proceed albeit with certain caveats.

Phase 1

The initial plan launched in November 1978 covered Codicote Road, Hitchin Road and Whiteways Bottom with the agreement of the OUC and local farmers. We decided to concentrate on local established species e.g. Oak, Ash, Field Maple and Birch.

We were a regular sight on Sunday mornings, mainly in November, December and January, providing the ground wasn't frozen, digging holes in the roadside banks and were affectionately known as "The Tree Planters". A number of volunteers joined in and occasionally we were augmented by local residents who wished to plant their own tree.

Phase 2

Commenced in 1997 and over a period of approx. 12 years covered the School, Ballslough Hill, Recreation Ground, Parkfield Sports Ground, Coopers Hill, Lloyd Way and the junction of Ansell's Lane and the Luton Road.



Supplies of trees and hedging were purchased from The Tree Heritage Company in Hertford at very reasonable prices.

Carefully selected sites were identified for specimen trees on The Orchard, Garden Fields and The Green.

We must not forget that all the work was done by volunteers and I would particularly mention the invaluable and enthusiastic support from youth organisations and school children on a number of projects.

Although no accurate records exist I estimate that approx. 600 trees and 800 hedgings were planted, a very small number of which became casualties but replacements were readily available from Pat's Bank.

Alan Smith

The late Pat Dyer, an enthusiastic gardener, is pictured.

turn to page 14

from page 13 **2000s** During the current century, the Bench Working Party has led the way in village tree planting. Most recently in Dec 2020, some of their number helped Andrew Manning plant about 2,000 trees along the edges of his land at the top of Claggy Road. That is on the eastern side and around the corner up Holt Lane. *Juliet Morton*

Saving trees and clearing plastic 2021

The planting of trees is an act of hope, expectation and appreciation of the countryside. It is wonderful at this time of environmental consciousness that this has and will be taking place in Kimpton. As part of the young trees' protection, tree guards, of mainly two sorts (wrap around and cylinder) are used to discourage deer (particularly) from devouring the tempting lush growth. There is a problem however if the trees inside their guards are not looked after properly and the guards not removed 4-6 years on.



We first became conscious of the unsightly plastic problem from looking at the hedge trees which had outgrown their wrappers on Claggy Road, leading out of Kimpton. With no real organisation except achieving permission from the farmer concerned, we started to remove them and gradually people who were interested joined in. The result has brought much pleasure but also 25 1ton bags of plastic. This is a shocking tally of the amount of plastic which could, in breaking down, have got into the land.



Encouraged by this, the state of the wood behind the Hoo haystack came to our attention and we wondered if we could help. The plastic lay around the plantation like spillakins. The land is owned by Oxford University Chest but we obtained permission from the tenant farmer, and set to to clear it. What we found was shocking in that in many cases the cylinders surrounded dead trees. We estimate that the trees are about 20 years old and way beyond needing cylinders. For the number of trees we actually freed the situation was critical as can be seen in the photograph.



Here you can see the rot has got in (the band of green) and without releasing the tree it could have died as many had already done so. A small group of us cleared up the wood and so hopefully the bluebells will grow unencumbered this Spring. We have also completed clearing the Cuckold's Cross woods of plastic tree guards. Now primroses too are beginning to display themselves freely. In both cases however the amount of plastic collected was huge. If it is not collected, it breaks down, gets in the soil and is/will be a hazard to wildlife. Our concern in writing this article is that in the wonderful enthusiasm of planting trees, the later removal of the plastic tree guards should be firmly in the diary also.

Please be assured that our motley crew are all very Covid aware and socially distanced to the tune of being about 15 – 20 metres apart stretched through the woodland. I would like to thank them for the marvellous work they have done. *Juliet Morton*



There are some serious issues below affecting personal, vehicle and property safety so do please take a little time to read them. I know some of us say “it will never happen to me” .. *but it can ... so better safe than sorry.*

Local Crime and Safer Neighbourhood Policing

During the last few months, it has been a fairly quiet time but there have been incidents relating to motor vehicle theft, property from motor vehicles, common assault related to “road rage” and some drug possession.

In terms of locally generated crime, if you are a victim of, or a witness to an incident which you feel is serious enough, do report it immediately to Hitchin Police Station using 101 and ask for a Crime No.

May we just remind you that our Hitchin Rural officers are Ward Constable Gary Pugsley and PCSO Heather Burrows who can be contacted via the automated control at County HQ on 01707 354192 or use the e-mail addresses inside the back cover of this magazine.

Scams to be aware of:

CENSUS 2021...

There are reports of emails/phone calls suggesting that there have been errors made in Census returns and a fine is being imposed and banks details are required to enable payment. The Office for National Statistics will never contact anyone in this way.

Covid 19 Vaccinations...

People claiming to be able to arrange a Covid vaccine for a fee. The NHS is the only organisation which has access to vaccines and will never ask for money.

A dangerous fake NHS text and emails have been circulating telling people that they are eligible for the Covid 19 vaccine. If you click on the link you will be taken to an extremely convincing NHS website that asks for your personal and financial details. **DO NOT CLICK ON ANY LINKS**, It is all fake!!! There is a Crimestoppers Covid Fraud Hotline which has been set up by the Government in partnership with Crimestoppers to enable individuals to report within the public sector during Covid, **the Hotline is 0800 587 5030**

Parcel Delivery ... Innocent looking e-mail from such as Royal Mail, DPD *etc.* saying they couldn't deliver a parcel and ask you to click a link and then provide personal and bank details.

Tax Evasion and Jury Service ... e-mails or phone messages claiming you owe HMRC money or to pay a certain amount to avoid Jury Service.

None of the above organisations send e-mails asking you to click a link.

If you receive any of the above messages please contact the **Action Fraud** website and/or contact the police.

Keyless Vehicle Theft

Still a worrying modus operandi where thieves target valuable cars and use a booster device to remotely “steal” your key, activate locks and start the engine. Contact your dealer for advice or store the key in a dedicated security pouch, metal box or wrapped in foil to shield it from any unwanted signal. Then store this as far from the parked car as possible.

On some cars it is possible to switch the key signal to “off” so check the manual or ask the dealer.

For additional security you could also fit your car with an old fashioned steering wheel lock (e.g.Krooklock} and/or an approved tracking device, which will help police recover a stolen vehicle.

to page 16

from page 15 **Vehicle and Contents Theft**

Countywide there has been a marked increase in these crimes so always lock your car and set the alarm and don't leave any valuables, Satnavs or Dash Cams on display.

There is an outbreak of theft of Catalytic Converters particularly from Hybrid cars, even in daylight, where the thieves profit from the sale of the precious metal content. Take special precautions such as parking in a garage or close to a wall, fit CCTV to your home, have fixing bolts welded or fit a dealer supplied security cover. It is also possible to etch or forensically mark the converter and use a windscreen sticker to advertise this.

OWL (On line Watch Link)

We particularly want more of you to join the growing numbers of residents benefitting from the receipt of police crime alerts direct by e-mail or telephone. Joining is painless by contacting www.owl.co.uk or our Watch Liaison Officer Verity Soued on wlo @herts.pnn.police.uk.

Seasonal Security Reminders.

When the lockdown is fully lifted and you are free to move about should you leave your property unoccupied for any length of time please secure all windows, doors, garages and sheds. Make the property look 'lived in' by parking a vehicle on the drive if possible and installing timer operated security lights and do please give a neighbour your contact details. Don't leave any keys within sight of an open letter box

Making Kimpton a better place to live

There has been a big increase in fly tipping recently so don't forget that you can report anonymously if you witness any incidents plus dog fouling, unruly behaviour, excessive noise and nuisance neighbours on Crime Stoppers 0800 555 111. Please use 101 for non-emergencies or you can go on line to: herts.police.uk/Report/Report

Hello from your new coordinators,

Now that Alan Smith has retired from the post of Kimpton Ward Coordinator we have taken over the role and would like to thank Alan for all the work he has done over the past many years. Although he has left the role, he will continue to support the NHW team by looking after his local Watch. We look forward to taking on the task of looking after the Kimpton Ward and if there is anything, we can do to help you we will be pleased to do so.

John Bowers, 07833 301 268 bowers984@btinternet.com
Angus Davidson, 07789 502 057 angussdavidson@btinternet.com

Kimpton Ward Neighbourhood Watch Coordinators

DON'T THROW IT AWAY!
Kimpton is collecting:



Save them and put in the marked containers
in the Church or the Dacre Rooms.
Kimpton Environmentalists will send them to be recycled.
For more info call Robin on: 07979 996406

Use and enjoy your church.....



For prayer, the food table, the book and jigsaw swap and for recycling crisp wrappers, stamps, bottle tops and pill foil.

The food table would welcome donations of dry, in-date food and anything is available to take away when needed.

It is open during daylight hours so come in and relax.



kimptonchurch.co.uk
kimptonvillage.com



Stress Awareness Month

April is Stress Awareness Month. Most people feel stressed sometimes and some people find stress helpful or even motivating. But if stress is affecting your life, there are things you can try that may help

**Prioritise your health
Get a good nights sleep
Practice deep breathing
Stay hydrated
Eat for wellbeing
Get moving to combat stress
Adopt a positive mind set
Master your time
Don't be a slave to tech
Learn to say no**

There is a lot on this list so perhaps concentrate on two or three to start with

***do not* try to do everything at once – set small targets you can easily achieve**

***do not* focus on the things you cannot change – focus your time and energy into helping yourself feel better**

***try not* to tell yourself that you're alone – most people feel stressed at some point in their life and support is available**

***try not to* use alcohol, cigarettes, gambling or drugs to relieve stress – these can all contribute to poor mental health**

Information taken from www.nhs.uk and stress.org.uk.

If you would like further information about the Bridge Cottage Surgery Patient Participation Group please email ppgbridgecottage@gmail.com

Prostate cancer is the most common cancer in men in the UK. One in eight men in the UK will get prostate cancer. It usually develops slowly, so there may be no signs for many years.

Symptoms of prostate cancer

Symptoms of prostate cancer do not usually appear until the prostate is large enough to affect the tube that carries urine from the bladder out of the penis (urethra). If you do notice changes in the way you urinate, this is more likely to be a sign of a very common non-cancerous problem called an enlarged prostate, or another health problem. But it's still a good idea to get it checked out. Possible changes include: difficulty starting to urinate or emptying your bladder.

COVID-19 Bridge Cottage Surgery is still open. Please note that we have closed the shutters to encourage social distancing. You can access help via: eConsults (online on our website) calling reception on 01438 715044 or leaving a letter through our letter box (in the black door). Current information on the vaccination schedule can also be found on www.bridgecottagesurgery.nhs.uk.

Kimpton Preschool have reached the finals!

As we near the end of the latest lockdown, we wanted to bring you some jolly news from Kimpton Preschool...

A big thank you from Kimpton Preschool for all of your help to get us nominated for the local *Little Ankle Biters Herts Awards*.

The first round of nominations saw over 12,000 nominations with 500 local businesses, organisations and individuals being recognised across 17 categories. So you can see just how special it is to reach the finals and how competitive it was!

Then, thanks to ALL of your village votes...we reached the finals, woohoo!

We are in the final five for: '**Best Community Spirit**' (how apt for our wonderful village!) & '**Best Charity/Not for Profit Organisation**'.

The winners will be announced at the Awards ceremony on 24th June, so we will keep you posted...fingers crossed for now!

Thank you so much for all your support Kimpton, what a very special village.

Preschool News

We have had a busy term celebrating *World Book Day*, with all of the children (and teachers!) dressing up as their favourite characters. We spent the day enjoying books with Daisy Bear. We then took part in *British Science Week*, with new and exciting experiments...including exploding volcanoes! The children also enjoyed the *Chinese New Year*, making Chinese lanterns and trying out chopsticks with their noodles.

This month we have been planting seeds to teach the children about life cycles, as part of the *Greening Campaign* (a project with the Kimpton Parish Council), to encourage fun, yet effective ways for communities to help tackle Climate Change positively.



With some of the older children moving on at the end of Summer - we are therefore looking to recruit new children. Please get in touch if you or anyone you know, are looking for an OFSTED Outstanding village Preschool, for 2-4yr olds. IMMEDIATE SPACES AVAILABLE for 15hrs or 30hrs, for both funded and self-funded. Contact manager@kimptonpreschool.co.uk or call 01438 833936.

Lastly, as a community run Preschool, we are always looking to add new skills and experience to support the Management Committee - a voluntary group made up of past and present parents that manage all

the business aspects of Preschool from recruitment to fundraising, marketing and finance. If you are interested in learning more about being part of the Management Committee, please email Mike Newman at chairman@kimptonpreschool.co.uk Have a safe and happy Easter

Best wishes from the Kimpton Preschool Team & Committee.
Visit kimptonpreschool.co.uk Follow us on twitter: @KimptonPre_Sch

visit the village website kimptonvillage.com

The Church in Kimpton

Parish Church

Priest-in-Charge

Rev'd Linda Williams

01438 833348 *with voicemail*
lindalpwilliams@hotmail.co.uk

Lay Reader

Andy Morton
01438 832427
adewm@aol.com

Church Wardens

Jenny Kelly
07818 613143
genkel@btinternet.com

Lynda Harvey
07487 413901
lynda.a.harvey@hotmail.com

Pastoral Care Co-ordinator

Liz Jamieson
01438 832858
liz@jamieson21.plus.com

Baptist Church

Perry Green at Peters Green

Minister

Rev Andrew Gale
01582 422635

Branch Leader

Miss Pam Greener

Your Parish Magazine

Due to the current situation this edition of the Parish Magazine is only available online. Please feel free to print it and pass it on to those not online.

Police Telephone Numbers

Urgent 999 Non urgent 101

Hitchin Safer Neighbourhood Team

Sergeant Jonathan Vine
jonathan.vine@herts.pnn.police.uk

Ward Constable Gary Pugsley
gary.pugsley@herts.pnn.police.uk

PCSO Heather Burrows
heather.burrows@herts.pnn.police.uk

Contact any officer by telephone on 01707 354192
(automated system)

Police and Crime Commissioner

David Lloyd
commissioner@herts.pnn.police.uk

Parish Magazine

Editor: Andy Wright

email: ***kimpton.editor@btinternet.com***

Typed or written copy to John Pollington, 10 Canham Close
Kimpton SG4 8SD 01438 832249

Deadline

Copy for the summer 2021 edition must be in by
Monday June 14th

Parish Council

Cllr Neil Burns (Chairman)
Cllr Ian Corbett
Cllr Alex Firth
Cllr Lewis Hawke
Cllr Jon Marsh
Cllr Sue O'Brien
Cllr Carly Procter
Cllr David Reavell

Parish Clerk

Carina Helm
Memorial Hall
clerk@kimptonpc.org.uk
01438 832573

North Herts District Councillor

Cllr John Bishop john.bishop@north-herts.gov.uk

County Councillor

Cllr Richard Thake richard.thake@hertscc.gov.uk

Member of Parliament

Bim Afolami www.bimafolami.co.uk

Helping Hand

North Herts Community Volunteer Services

Can provide transport to hospitals. For details ring 01462 689400

The Samaritans

If you would like to talk to the Samaritans or find out more about becoming a volunteer, please ring 01582 720666 or freephone 116 123 anytime day or night or email jo@samaritans.org

North Herts & District Citizens Advice Bureau

To contact the CAB phone 0344 411 1444 www.northhertscab.org.uk

Kimpton Preschool

Our friendly team, based at Linden Lodge in the grounds of Kimpton Primary School, offers sessional care for children aged two to five years old.

We are open during term time, Monday to Friday. Our morning sessions run from 8.50am to 11.50am and Lunch Clubs from 11.50am to 1.20pm. We now also offer 30 hours childcare, with afternoon sessions running from 1.20pm to 3.05pm, where there is enough interest. For more details, please contact Shahnaz Vayani, Preschool Manager, on 01438 833936 or email communications@kimpton-preschool.co.uk

The Dacre Rooms

To book The Dacre Rooms please email our bookings secretary Wendy Dollin bookings@dacrerooms.info

Kimpton Memorial Hall

For bookings contact Mrs Barbara Kazwini. 6 The Wick, Kimpton. 01438 832620 barbara.kazwini@btinternet.com

Useful Links

kimptonvillage.com

herts.police.uk

stalbans.anglican.org

kimpton.herts.sch.uk

kimptonchurch.co.uk

 Kimpton Church Hertfordshire